

IDS COMPANY PROFILE

WHO WE ARE

We are a not for profit Charitable company established to give managers of public infrastructural assets, access to world leading software and research that will enable them to deliver the best possible whole of life outcomes for their assets to their communities with confidence.

Infrastructure Decision Support Ltd (IDS) was established in 2008 and is the newest member of the INGENIUM family. The company is has been registered with the Companies Registrar, and has Charitable Status under the Charities Act 2005.

We are extremely cost effective through our collective purchasing of software and our ability to pool and share resources and expertise from agencies and leading consultants across the country.

WHAT WE DO

We are stewards of intellectual property developed for public infrastructural assets by public agencies or their consultants using the dTIMS modelling software as part of the analysis.

We provide support to managers of infrastructural assets by setting the standard in the industry relating to infrastructure deterioration and maintenance modelling. This includes development in the areas of the following:

- Processes to help quantify and create the vision for your assets. Optimising performance, including ability to consider social aspects.
- Computer models/processes that let you see if you spend too much or not enough money on your network, your most significant asset.
- An analysis tool helping you to optimise the investment in the infrastructure and operations you are managing.
- Providing tools for supporting long-term decision for the sustainable planning of infrastructure maintenance, replacements and renewals.

A key component of helping us achieve this is our role as an independent and exclusive dTIMS distributor for New Zealand.

IDS Ltd
Assisting with Infrastructure Decisions



PO Box 25415 Panama Street
Wellington

☎: 04 499 5807

☎: 04 473 1025

✉: ids@ids.org.nz

www.ids.org.nz

HOW WE WORK

The IDS company is structured to have a representation from the industry as participating members.

The Board Consists of:

Neil Cook - Wairoa District Council (Chair)

David Fraser - Hastings District Council

Gordon Hart - NZTA

The management team consists of:

Business Operations Manager - Angela Tempest

Business Manager - Theuns Henning

Technical Manager - Mike Tapper

A Technical Advisory Group (dTAG) exists to investigate and advise IDS on technical development issues. The Business Manager and dTAG are supported by the technical consortium of consultants involved in the development, implementation and execution of dTIMS CT models and analyses for a variety of clients. All consultants with dTIMS licenses automatically become part of the technical consortium.

We provide technical support in an unique integrated manner that will enable you to manage your assets and achieve your goals



Helping YOU
To Make Decisions
About Your **Infrastructure**

IDS Ltd
Assisting with Infrastructure Decisions



BUREAU SERVICES

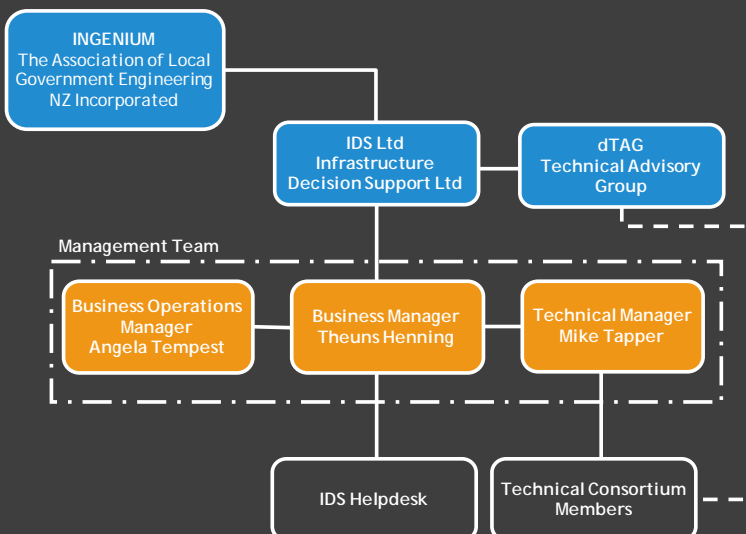
IDS have created a bureau service to provide independent advice to road controlling authorities to assist them in accessing the benefits of dTIMS.

Services include:

- Assessments of what dTIMS can do for you
- Roadmaps for your analysis programme
- Assessing what data you have and need to do an analysis
- Assistance with procuring, commissioning and scoping dTIMS services
- Independent dTIMS Analyses (to both RCA's and other consultants)
- Independent Peer Reviews

Services are available to current license holders. We can also show the benefit of dTIMS to those RCAs considering committing to a license and welcome these discussions.

OUR STRUCTURE



CONTACT US

Technical Manager

Mike Tapper

☎ 07 577 1148

✉ mike@ids.org.nz

Business Manager

Theuns Henning

☎ 027 578 8662

✉ theuns@ids.org.nz

Business Operations Manager

Angela Tempest

☎ 04 499 5807

✉ angela@ingenium.org.nz